

2020

Texas High Plains Vintage at a Glance

“Winegrowers rose to the challenges and were rewarded with a graciously warm summer and smooth finish to the season for phenolic beauty.”

This 2020 Texas High Plains vintage chart depicts the high and low temperatures for each day of the growing season, key stages of the growing season, diurnal temperature variation, as well as rainfall.

Temperature variation has an important effect on vines and grape development, thus imprinting unique hallmarks on each vintage. The key stages of the growing season play an important role in the viticultural needs of the season and harvest.

For example, many growers compare the date of bloom to growing season data from previous vintages to predict the timeframe for harvest.

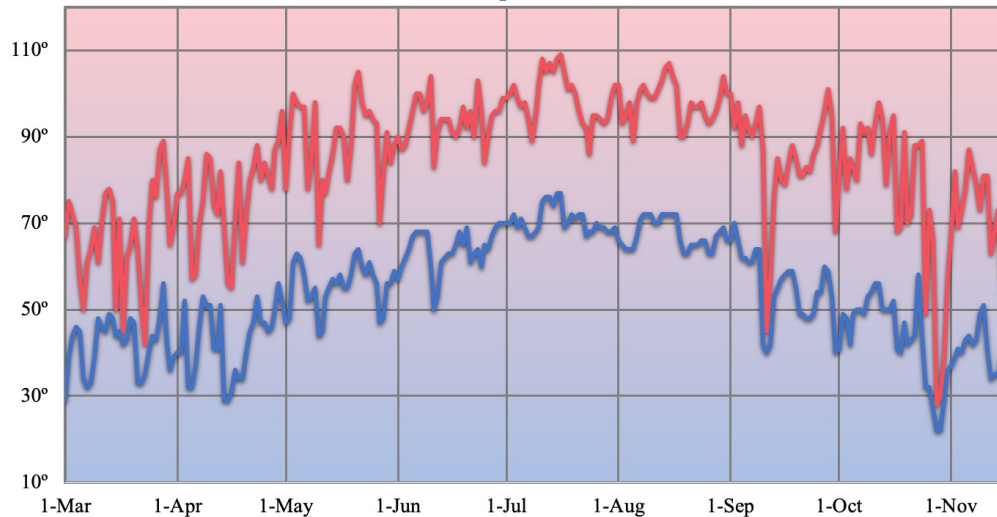
Rainfall effects the present vintage and future vintages influencing water storage in the soil and in underground aquifers used for irrigation.

Data for Brownfield 2, TX US provided by NOAA.

Vintage at a Glance courtesy of Apical Texas.

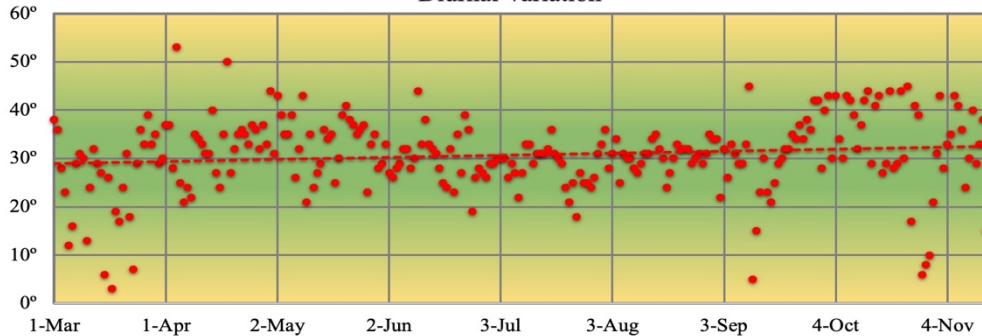


Temperatures



Bud Break Bloom Fruit Set Véraison Harvest Dormancy

Diurnal Variation



In-Season Precipitation

